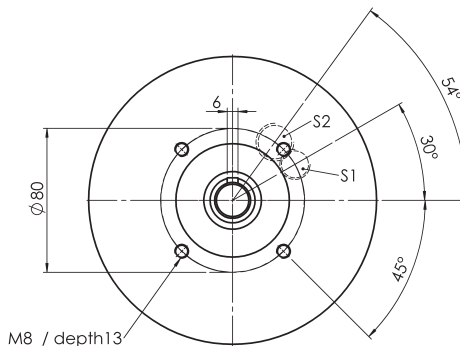
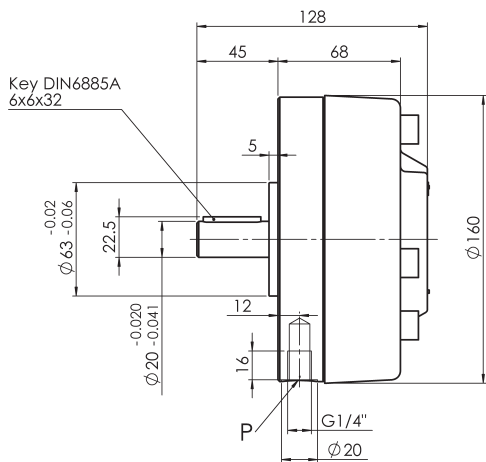


Radial piston pumps Type BRK up to 1000 bar up to 6,33 cm³/rev

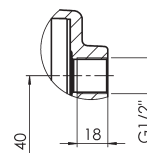
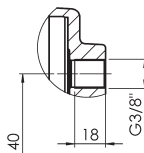
Dimension drawing 2 sizes 01 and 11 up to 1000 bar

Design revision B



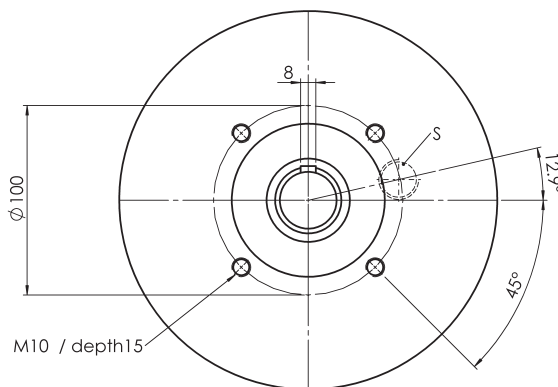
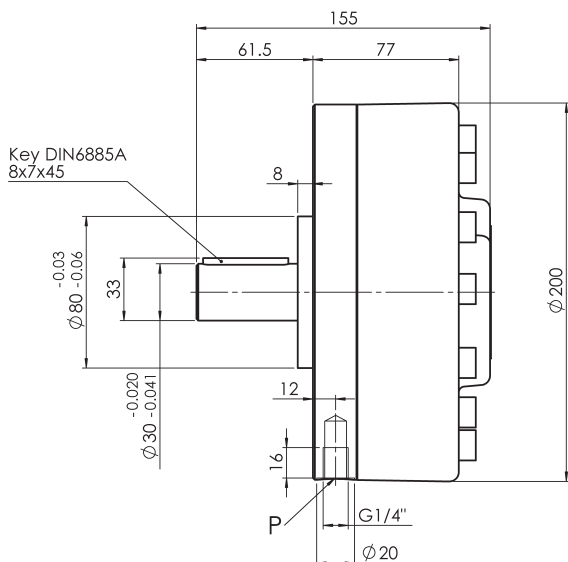
Suction connection S1
3 pistons

Suction connection S2
5 pistons

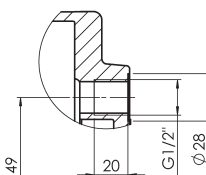


Dimension drawing 3 sizes 02 and 12 up to 1000 bar

Design revision B



Suction connection S
7 pistons



BIERI
Hydraulik

Bieri Hydraulik AG
Könizstrasse 274
CH-3097 Liebefeld/Switzerland

Telephone +41 31 970 09 09
Fax +41 31 970 09 10
sales@bierihydraulik.com

Design and data subject to modification
BRK-GB-02-2007

Radial piston pumps Type BRK up to 1000 bar up to 6,33 cm³/rev

Features

High volumetric efficiency.
Self-priming and venting.
Low pulsation. Low noise level. Long life.
Specially suitable for demanding applications with continuous pressures up to 1000 bar. Combination with low pressure gear pumps possible.



BIERI
Hydraulik

The valve controlled radial piston pump is of modular construction and can be supplied with 3, 5 or 7 pistons per bank.

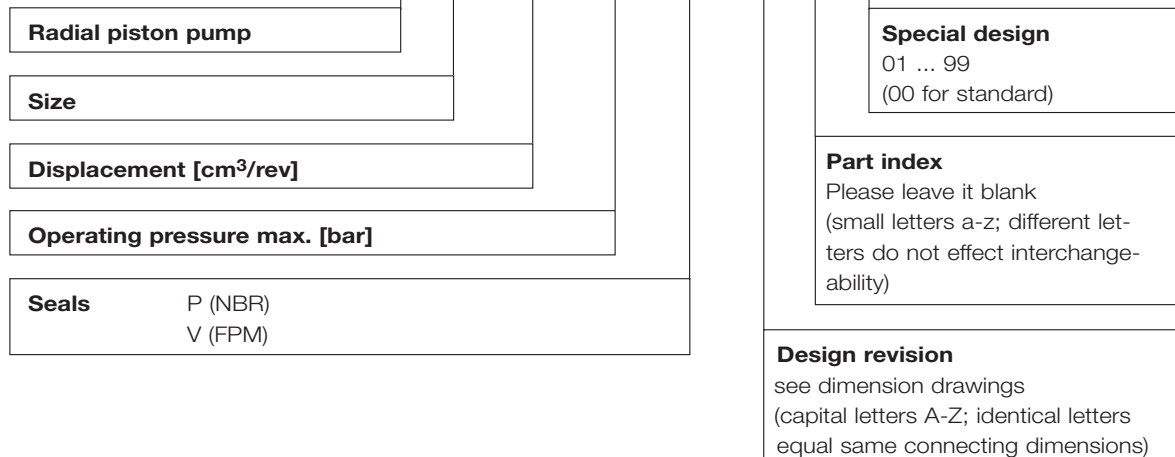
Multi outlet, other displacements, pressure- or revolution ranges on request. Combination with gear pumps as per separate data sheet for BKP.

Technical data	Hydraulic fluid	mineral oil according to DIN 51524 (other fluids on request)	
	Fluid temperature range	NBR: -30 to 80 °C	
		FPM: -20 to 80 °C	
	Ambient temperature range	-30 to 50 °C	
	Viscosity range	5 to 220 cSt (optimal: 15 -35)	
	Suction pressure	-0,2 to 0,5 bar relative	
	Filtration	according to NAS 1638, class 8 or ISO/DIN 4406 16/14	
	Material	pressure flange:	
		1000 bar:	steel
		700 bar:	cast steel
	Material	driving shaft:	steel
		cover:	cast aluminium
	Weight	see table	
	Installation position	any	
Radial force / Axial force onto driving shaft	not allowed		
Direction of rotation	any		
Suction height	max. 500mm		

Radial piston pumps Type BRK up to 1000 bar up to 6,33 cm³/rev

Ordering code: Example

BRK 01 - 0,47 - 1000 - P - [] - [] - 00



Calculation of driving motor power

$$P = \frac{p \cdot V_g \cdot n \cdot k}{\eta_t \cdot 600 \cdot 10^3}$$

P = Driving power [kW]
p = Operating pressure [bar]
V_g = Displacement [cm³/rev]
n = Speed [rpm]
η_t = Overall efficiency approx. 0,9

k = Pulsation factor
- with 3 pistons: k approx. 1,1
- with 5 pistons: k approx. 1,0
- with 7 pistons: k approx. 1,0

Radial piston pumps BRK sizes 01 and 11 (dimension drawing 1) up to 700 bar

Number of pistons	Piston Ø [mm]	Displacement [cm ³ /rev]	Operating pressure max. [bar]	Speed max. [rpm]	Weight [kg]	Size
3	5	0.47	700	2000	7	01
3	6	0.68	700	2000	7	01
3	8	1.21	700	2000	7	01
3	9	1.52	700	2000	7	11
3	10	1.88	700	2000	7	11
3	12	2.71	550	2000	7	11
5	5	0.78	700	2000	7.5	01
5	6	1.13	700	2000	7.5	01
5	8	2.02	700	2000	7.5	11
5	9	2.54	700	2000	7.5	11
5	10	3.14	700	2000	7.5	11
5	12	4.52	550	2000	7.5	11
7	5	1.09	700	2000	8	01
7	6	1.58	700	2000	8	01
7	8	2.83	700	2000	8	11
7	9	3.56	700	2000	8	11
7	10	4.40	550	2000	8	11
7	12	6.33	400	2000	8	11

Radial piston pumps Type BRK up to 1000 bar up to 6,33 cm³/rev

Radial piston pumps BRK sizes 01 and 11 (dimension drawing 2) up to 1000 bar

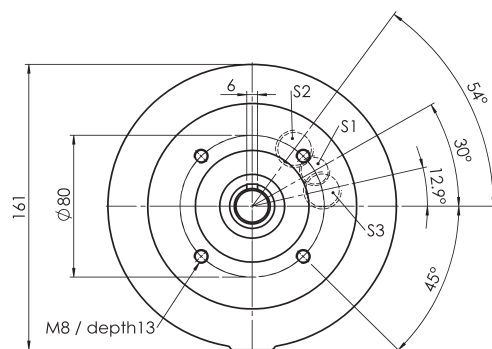
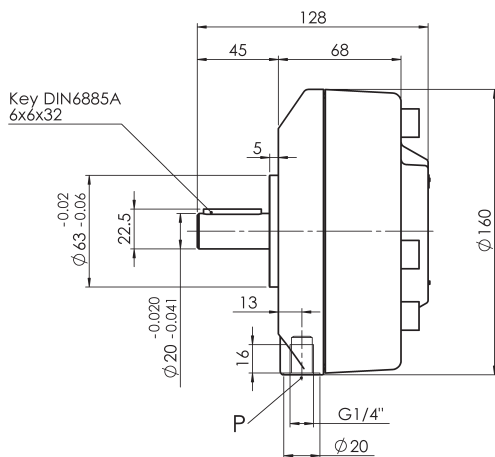
Number of pistons	Piston Ø [mm]	Displacement [cm ³ /rev]	Operating pressure max. [bar]	Speed max. [rpm]	Weight [kg]	Size
3	5	0.47	1000	2000	7	01
3	6	0.68	1000	2000	7	01
3	8	1.21	1000	2000	7	11
3	9	1.52	1000	2000	7	11
3	10	1.88	850	2000	7	11
5	5	0.78	1000	2000	7.5	01
5	6	1.13	1000	2000	7.5	01
5	8	2.02	1000	2000	7.5	11
5	9	2.54	1000	2000	7.5	11
5	10	3.14	850	2000	7.5	11

Radial piston pumps BRK sizes 02 and 12 (dimension drawing 3) up to 1000 bar

Number of pistons	Piston Ø [mm]	Displacement [cm ³ /rev]	Operating pressure max. [bar]	Speed max. [rpm]	Weight [kg]	Size
7	5	1.09	1000	1800	12.5	02
7	6	1.58	1000	1800	12.5	02
7	8	2.83	1000	1800	12.5	02
7	9	3.56	800	1800	12.5	02
7	9	3.56	1000	1800	12.5	12
7	10	4.40	900	1800	12.5	12
7	12	6.33	850	1800	12.5	12

Dimension drawing 1 sizes 01 and 11 up to 700 bar

Design revision B



Suction connection
S1 3 pistons

Suction connection
S2 5 pistons
S3 7 pistons

